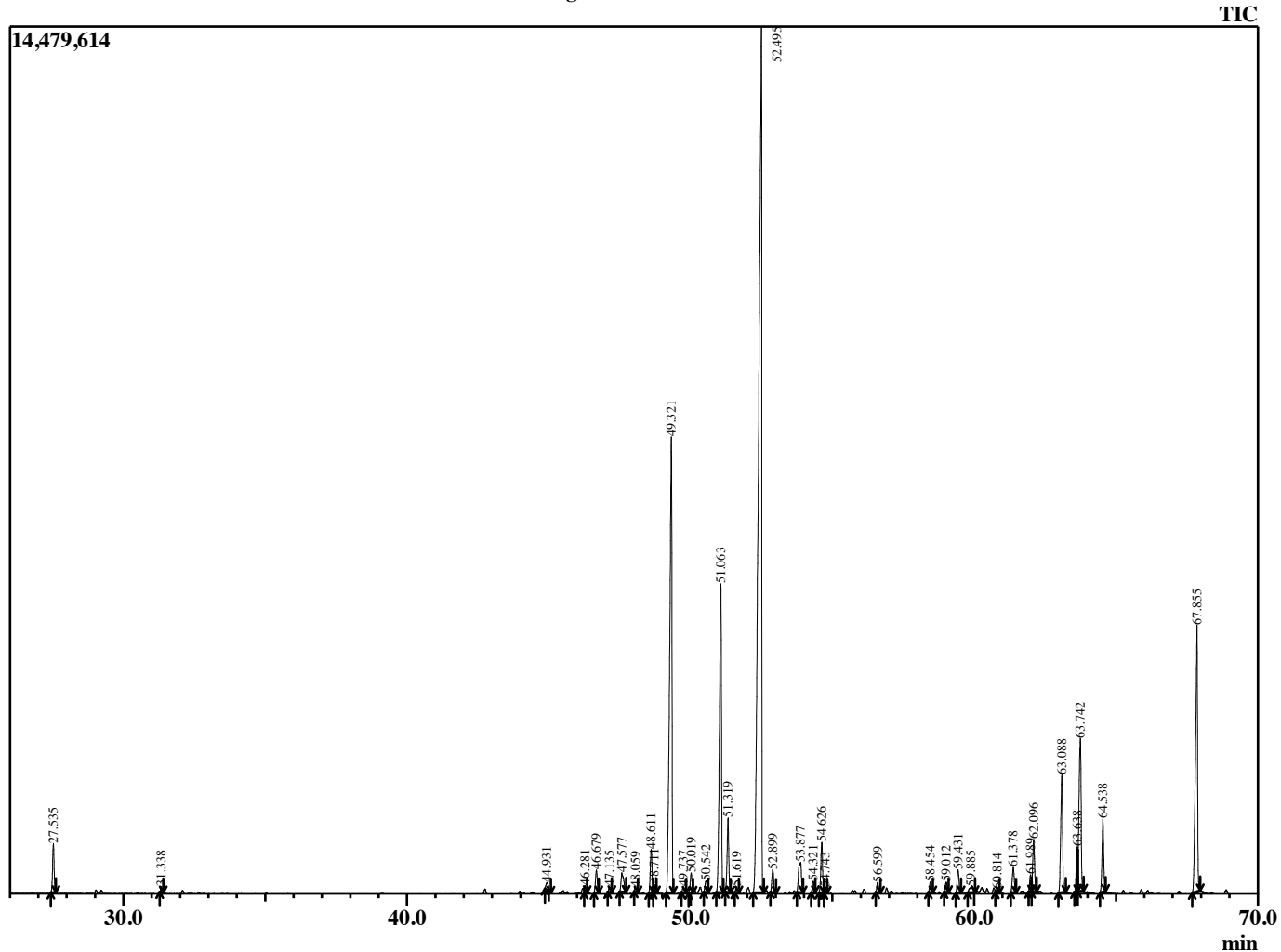


Sample Information

Analyzed by : B. Harris
 Analyzed : 8/19/2016 9:25:08 PM
 Sample Type : Essential Oil
 Sample Name : CedAtl2
 Lot Number : 91880
 Injection Volume : 0.10

Chromatogram CedAtl2 Lot 91880



R.Time	Name	Area%
27.535	4-Acetyl-1-methylcyclohexene	1.11
31.338	Acetophenone <4'-methyl->	0.12
44.931	Unknown	0.27
46.281	Vestitenone Z	0.15
46.679	Longifolene	0.59
47.135	Ylangene <alpha>	0.13
47.577	Himachala-2,4-diene	0.74
48.059	Bergamotene <trans-alpha>	0.09
48.611	Vestitenone E	1.09
48.711	Unknown	0.20
49.321	Himachalene <alpha>	15.55
49.737	Unknown	0.15
50.019	Isovalencenol <trans>	0.53
50.542	Neocallitropsene <alpha>	0.32
51.063	Himachalene <gamma>	9.23
51.319	Himachala-1,4-diene <11aH>	1.86
51.619	Amorphane <Z-4,10-epoxy>	0.13
52.495	Himachalene <beta>	40.41
52.899	Himachalene <a-dehydro-ar>	0.61
53.877	Neoisolongifolene, 8,9-dehydro-	1.31
54.321	Vetivenene <gamma>	0.29
54.626	Bisabolene <alpha>	1.32
54.743	Calacorene <alpha>	0.11
56.599	Himachalene epoxide	0.25
58.454	Longiborneol	0.28
59.012	Himachalene oxide <beta>	0.28
59.431	Isolongifolol	0.62
59.885	Unknown	0.33
60.814	Himachalol <alpha>	0.09
61.378	Himachaelene isomer	0.71
61.989	Unknown	0.41
62.096	Atlantone <Z-gamma>	1.42
63.088	Himachalol <allo>	3.19
63.638	Deodarone (4R,8R)	0.96
63.742	Himachalol isomer	4.98
64.538	Atlantone <Z-alpha>	1.86
67.855	Atlantone <E-alpha>	8.28
		100.00