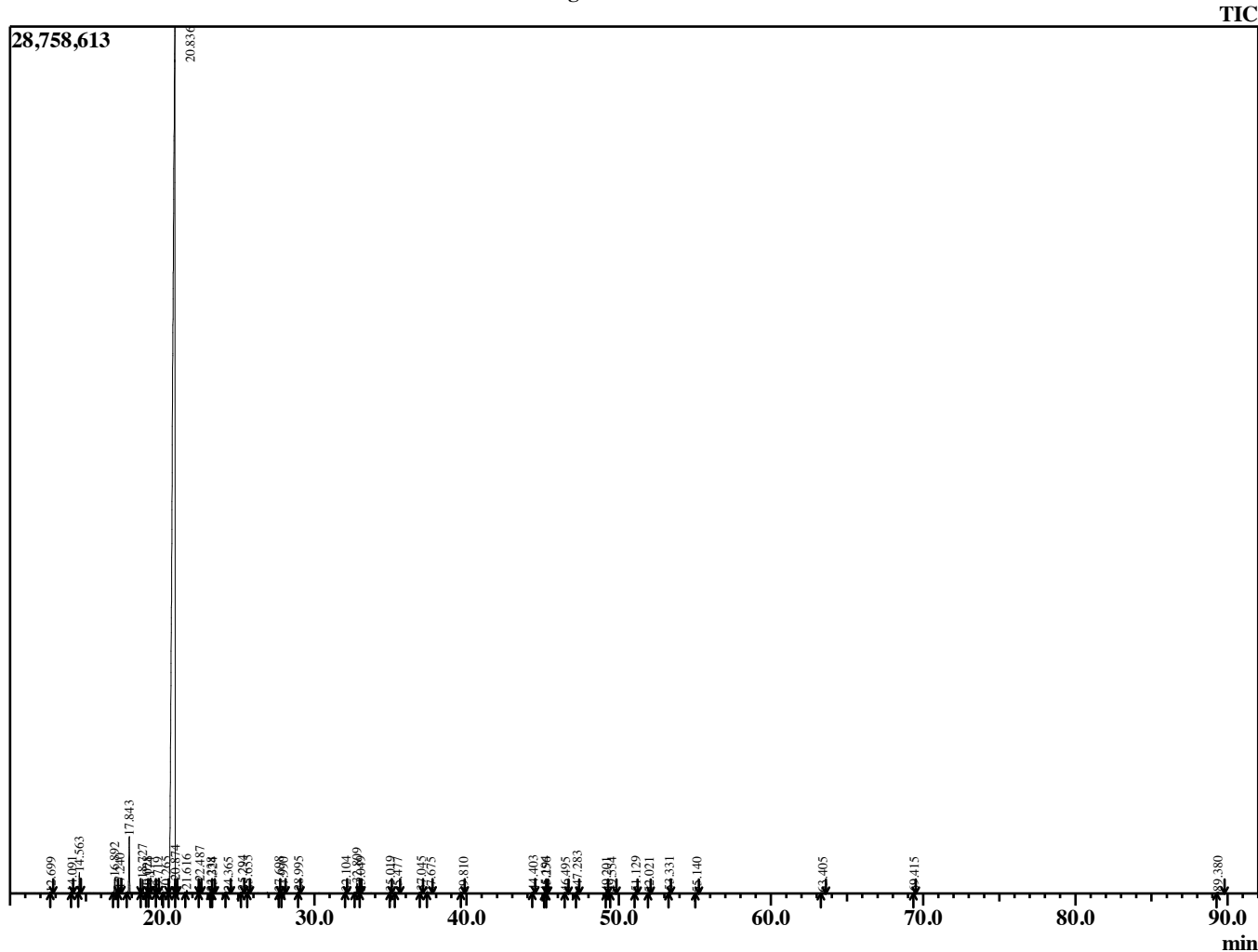


Sample Information

Analyzed by : B. Harris
 Analyzed : 1/24/2017 6:53:20 PM
 Sample Type : Essential Oil
 Sample Name : CitPar2
 Lot Number : 38897
 Injection Volume : 0.20

Chromatogram CitPar2 Lot 38897



R.Time	Name	Area%
12.699	Heptanal	0.01
14.091	Thujene <alpha>	0.03
14.563	Pinene <alpha>	0.58
16.892	Sabinene	0.50
17.240	Pinene <beta>	0.12
17.843	Myrcene	1.86
18.727	Octanal	0.46
19.028	Phellandrene <alpha>	0.03
19.174	3-Carene	0.01
19.719	Terpinene <alpha>	0.01
20.265	Cymene <para>	0.09
20.836	Limonene	93.91
20.874	Phellandrene <beta>	0.21
21.616	Ocimene <(E)-, beta->	0.11
22.487	Terpinene <gamma>	0.37
23.238	1-Octanol	0.02
23.324	Sabinene hydrate <cis>	0.02
24.365	Terpinolene	0.03
25.294	Linalool	0.08
25.655	Nonanal	0.08
27.698	Limonene oxide <cis>	0.02
27.990	Limonene oxide <trans>	0.03
28.995	Citronellal	0.05
32.104	Terpineol <alpha>	0.04
32.809	Decanal	0.36
33.049	Octyl acetate	0.04
35.019	Neral	0.03
35.477	Carvone	0.02
37.045	Geranial	0.06
37.675	Perillaldehyde	0.01
39.810	Undecanal	0.01
44.403	Copaene <alpha>	0.09
45.194	Cubebene <beta>	0.05
45.256	Elemene <beta>	0.02
46.495	Dodecanal	0.03
47.283	Caryophyllene <trans>	0.26
49.201	Farnesene <E-beta>	0.03
49.554	Humulene <alpha>	0.03
51.129	Germacrene D	0.04
52.021	Bicyclogermacrene	0.01
53.331	Cadinene <delta>	0.07
55.140	Elemol <alpha>	0.02
63.405	Sinensal <beta>	0.01
69.415	Nootkatone	0.04
89.380	Osthole	0.09
		100.00

