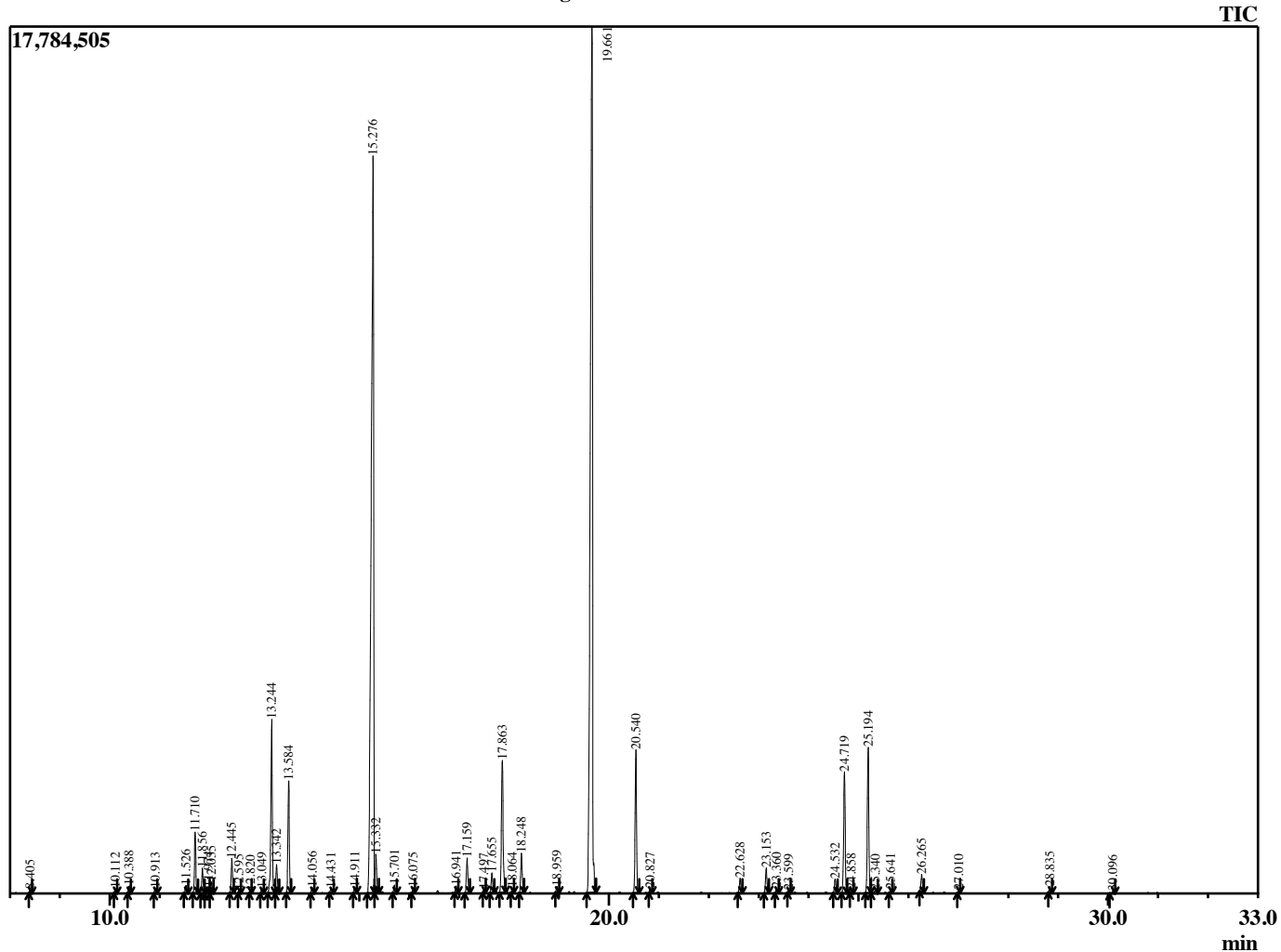


Sample Information

Analyzed by : B. Harris  
 Analyzed : 6/3/2016 2:32:03 PM  
 Sample Type : Essential Oil  
 Sample Name : LavAn9B  
 Lot Number : 31566  
 Injection Volume : 0.10

Chromatogram LavAn9B Lot 31566



R.Time	Name	Area%
7.420	Hexane, 1-methoxy-	0.14
8.405	Hexanol <n->	0.08
10.112	Thujene <alpha->	0.11
10.388	Pinene <alpha->	0.16
10.913	Camphene	0.13
11.526	1-Octen-3-ol	0.20
11.710	3-Octanone	1.47
11.856	Myrcene	0.59
11.974	Butyl butyrate	0.15
12.035	Hexanol <ethyl->	0.27
12.445	Hexyl acetate	0.82
12.595	3-Carene	0.07
12.820	Terpinene <alpha->	0.03
13.049	Cymene <para->	0.12
13.244	Ocimene <Z-beta->	4.69
13.342	1,8-Cineole	0.75
13.584	Ocimene <E-beta->	2.73
14.056	Terpinene <gamma->	0.15
14.431	Linalool oxide <trans->	0.15
14.911	Terpinyl formate <alpha->	0.14
15.276	Linalool	31.02
15.332	Octene <3-acetoxy->	0.96
15.701	3-Octyl acetate	0.20
16.075	Ocimene <allo->	0.12
16.941	Camphor	0.17
17.159	Lavandulol	0.91
17.497	Undeca-1,3,5-triene	0.06
17.655	Borneol	0.54
17.863	Terpinen-4-ol	3.88
18.064	Cryptone	0.12
18.248	Terpineol <alpha->	1.04
18.959	Nerol	0.16
19.661	Linalyl acetate	34.16
20.540	Lavandulyl acetate	3.72
20.827	Bornyl acetate	0.12
22.628	Neryl acetate	0.38
23.153	Geranyl acetate	0.65
23.360	Hexanoate <hexyl->	0.12
23.599	Zingiberene <alpha->	0.06
24.532	Santalene <alpha->	0.37
24.719	Caryophyllene <trans->	3.33
24.858	Bergamotene <trans-alpha->	0.11
25.194	Farnesene <E-beta->	3.91
25.340	Cedrene <alpha->	0.11
25.641	Humulene <alpha->	0.09
26.265	Germacrene D	0.46
27.010	Cadinene <gamma->	0.07
28.835	Caryophyllene oxide	0.16
30.096	Muuroiol <alpha->	0.06
		100.00