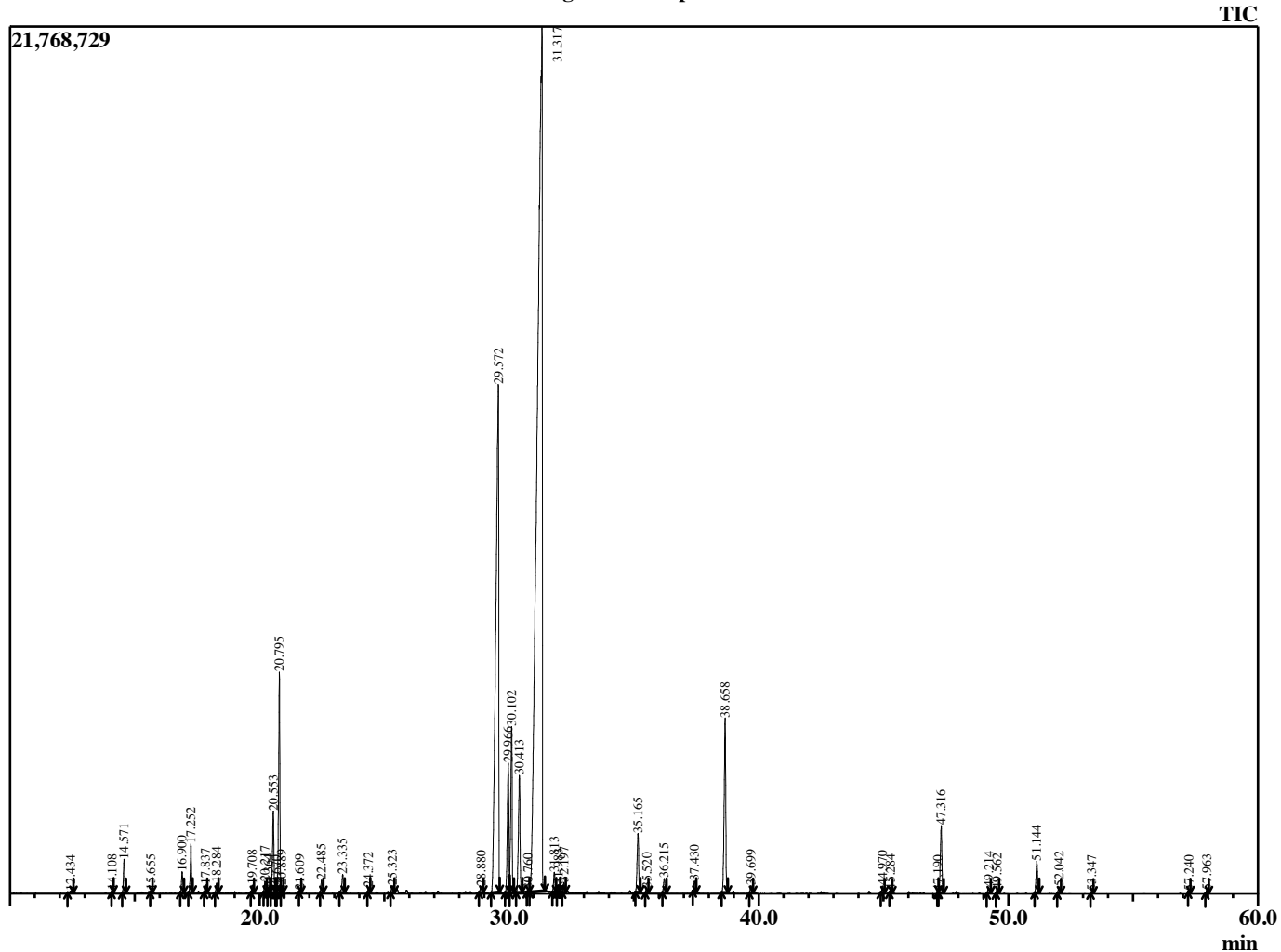


Sample Information

Analyzed by : B. Harris  
 Analyzed : 2/8/2017 4:54:51 AM  
 Sample Type : Essential Oil  
 Sample Name : MenPip4  
 Lot Number : 38966  
 Injection Volume : 0.20

Chromatogram MenPip4 Lot 34966



R.Time	Name	Area%
12.434	Furan, 2,5-diethyltetrahydro-	0.02
14.108	Thujene <alpha->	0.02
14.571	Pinene <alpha->	0.48
15.655	Cyclohexanone, 3-methyl-	0.02
16.900	Sabinene	0.31
17.252	Pinene <beta->	0.74
17.837	Myrcene	0.11
18.284	3-Octanol	0.15
19.708	Terpinene <alpha->	0.11
20.217	Cymene <para->	0.17
20.364	Hexanol <2-ethyl->	0.03
20.553	Limonene	1.44
20.670	Phellandrene <beta->	0.02
20.795	1,8-Cineole	3.67
20.889	Ocimene <Z-beta->	0.09
21.609	Ocimene <E-beta->	0.02
22.485	Terpinene <gamma->	0.20
23.335	Sabinene hydrate <cis->	0.34
24.372	Terpinolene	0.07
25.323	Linalool	0.13
28.880	Isopulegol	0.13
29.572	Menthone	18.86
29.966	Menthofuran	2.61
30.102	Menthone <iso->	3.05
30.413	Menthol <neo->	2.49
30.760	Isopulegone <trans->	0.03
31.317	Menthol	56.06
31.813	Menthol <iso->	0.34
31.983	Menthol <neois->	0.12
32.197	Terpineol <alpha->	0.17
35.165	Pulegone	1.17
35.520	Carvone	0.06
36.215	Piperitone	0.26
37.430	Menthyl acetate <neo->	0.18
38.658	Menthyl acetate	3.65
39.699	Menthyl acetate <iso->	0.12
44.970	Bourbonene <beta->	0.13
45.284	Elemene <beta->	0.04
47.190	Ylangene <beta->	0.02
47.316	Caryophyllene <trans->	1.37
49.214	Farnesene <E-beta->	0.11
49.562	Humulene <alpha->	0.06
51.144	Germacrene D	0.61
52.042	Bicyclogermacrene	0.11
53.347	Cadinene <delta->	0.03
57.240	Caryophyllene oxide	0.02
57.963	Viridiflorol	0.05
		100.00

