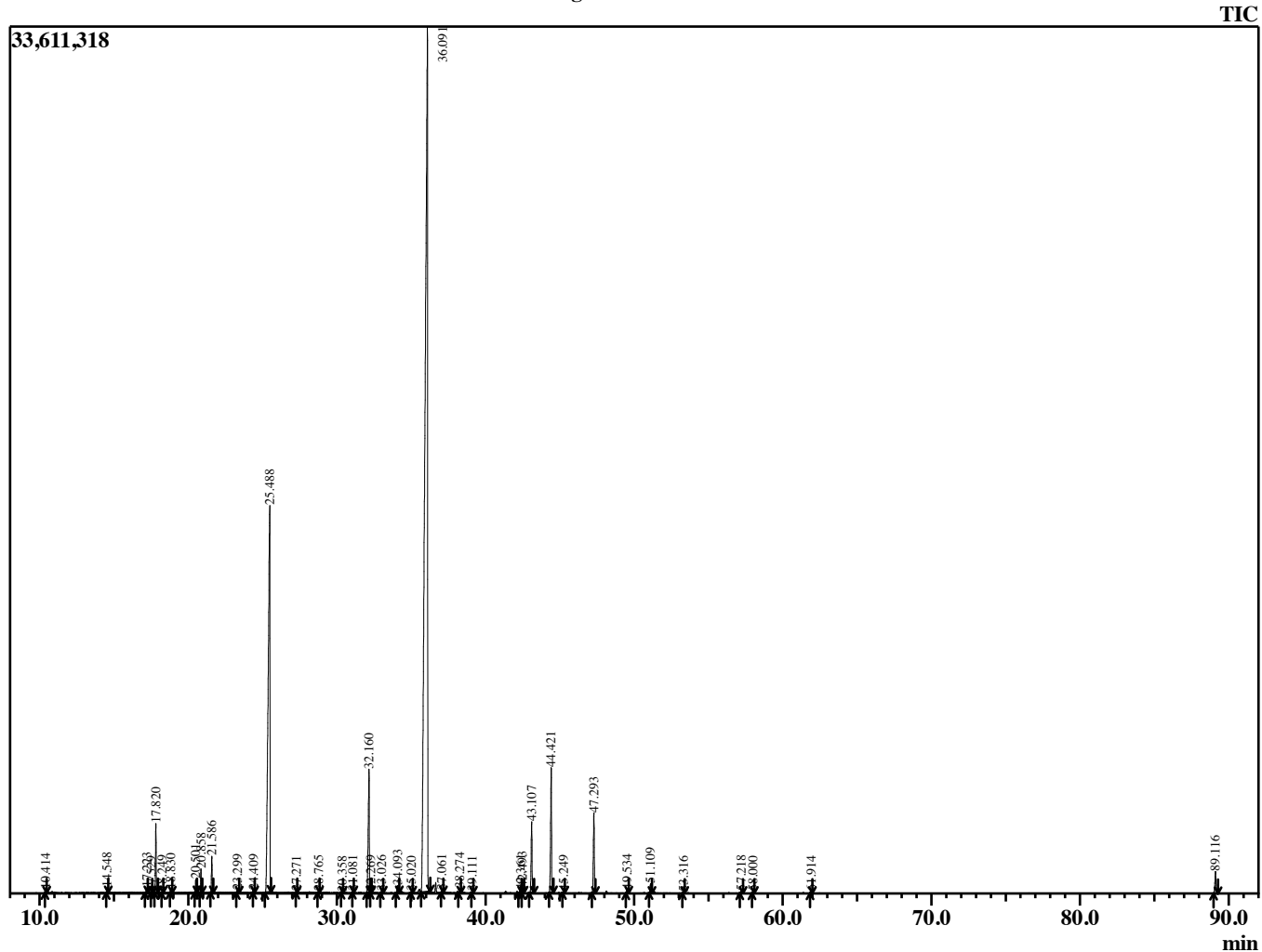


Sample Information

Analyzed by : B. Harris
 Analyzed : 2/15/2017 9:06:06 AM
 Sample Type : Essential Oil
 Sample Name : SalSci2
 Lot Number : 33773
 Injection Volume : 0.20

Chromatogram SalSci2 Lot 33773



R.Time	Name	Area%
10.414	Hexenol <3Z>	0.06
14.548	Pinene <alpha>	0.09
17.223	Pinene <beta>	0.12
17.529	Camphene	0.02
17.820	Myrcene	1.35
18.249	3-Octanol	0.03
18.830	Pseudolimonene	0.07
20.501	Limonene	0.27
20.858	Ocimene <Z-beta>	0.48
21.586	Ocimene <E-beta>	0.74
23.299	Linalool oxide <cis-(furanoid)>	0.06
24.409	Linalool oxide <trans-(furanoid)>	0.05
25.488	Linalool	19.60
27.271	Ocimene <allo>	0.01
28.765	Camphor	0.03
30.358	Borneol	0.02
31.081	Terpinen-4-ol	0.02
32.160	Terpineol <alpha>	3.77
32.269	Methyl chavicol	0.04
33.026	Octyl acetate	0.05
34.093	Nerol	0.21
35.020	Neral	0.04
36.091	Linalyl acetate	63.87
37.061	Geranial	0.06
38.274	Bornyl acetate	0.09
39.111	Carvacrol	0.03
42.361	Terpinyl acetate <beta>	0.09
42.493	Citronellyl acetate	0.14
43.107	Neryl acetate	1.83
44.421	Geranyl acetate	3.34
45.249	Elemene <beta>	0.04
47.293	Caryophyllene <trans>	2.14
49.534	Humulene <alpha>	0.09
51.109	Germacrene D	0.24
53.316	Cadinene <delta>	0.03
57.218	Caryophyllene oxide	0.08
58.000	Guaiol	0.03
61.914	Bulnesol	0.04
89.116	Sclareol	0.71
		100.00

